



WARM EMBRACE

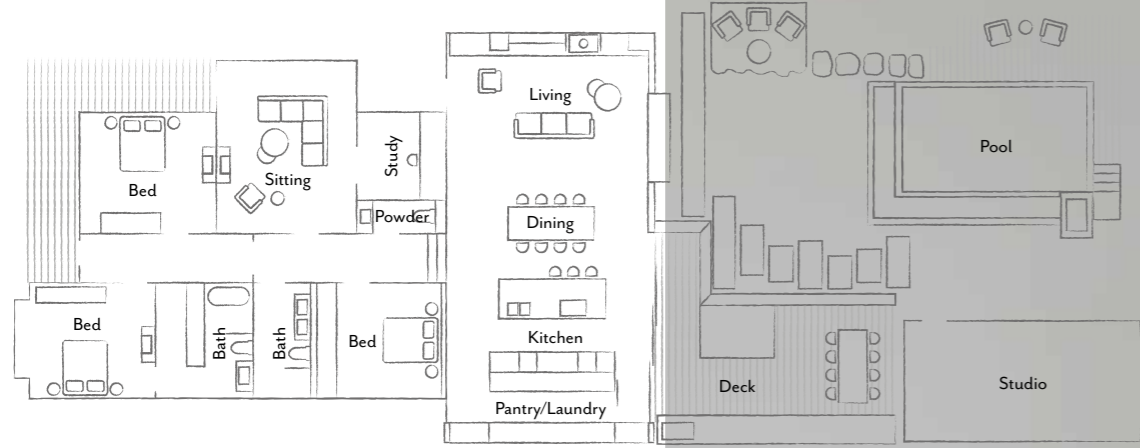
A home rich in history is transformed for future generations, thanks to a considered addition.

STORY *Stephanie Hope* | PHOTOGRAPHY *Shannon McGrath*



BACKYARD Standing seam single lock cladding in Colorbond Surfmist adorns the new rear extension where an ancient grapevine is the star. Blackbutt decking and stairs. Landscaping by Bethany Williamson. **KITCHEN** Island in Elba marble, Artedomus. Stellar Works 'Utility' stools, Living Edge. 'Albany' rangehood, Qasair.

THE LAYOUT



LIVING The cantilevered window seat lined with Contemporary Leathers 'Vista' leather in Rosemary provides a constant connection with the garden. 'Stuv 21' single-sided fireplace, Oblica. Fireplace surround in black powder coat. Sofa, Moroso. Eames moulded plywood coffee table, Living Edge. Vitra 'Akari 24N' table lamp.

“The design responds to the movement of the sun as it wraps around the house.”

ELIZA BLAIR, ARCHITECT

There's a dearly departed Italian nonna who once presided over this Edwardian home in a leafy pocket of Melbourne's south-east. The red-brick exterior, with its ornate awning and tessellated-tiled entry, draws you in like a warm hug, and you can almost smell the aroma of the meals she would lovingly prepare for her family each week.

It was this welcoming essence that enticed the home's current owner Jenny to purchase it five years ago. "It had a wonderful energy; it felt happy," says Jenny, who lives here with her son Oliver, 19, and daughter Francesca, 16. "The garden, albeit overgrown, was filled with lemon, olive and fig trees, an old apple tree and two 60-year-old grapevines that were grown from Malbec cuttings brought over from Italy. And the house itself, while in a very rundown state, had great bones, good sized rooms and was filled with sunlight."

In anticipation of a more extensive renovation down the track, Jenny did some preliminary improvements herself, redoing the stumps, wiring, plumbing and plastering, replacing roof tiles, installing hydronic heating and removing two asbestos-ridden sheds from the backyard. As soon as she could, Jenny forged ahead with the full transformation, engaging architect Eliza Blair to create a single-level addition to the three-bedroom home with a kitchen, living and dining space. "This extension sought to contrast with the existing house by prioritising natural light, indoor-outdoor living and incorporating sustainable features," says Eliza, ▶



THIS IS THE LIFE

Jenny lists the window seat in the living room as one of her favourite places to be. "It's lovely sitting there with a coffee when the sun is on it," she says. The kitchen island comes a close second. "I always feel connected when cooking because I can look out to the dining and living area rather than having my back turned. My kids or dinner guests can sit there while I'm cooking, too."



KITCHEN Tall kitchen joinery conceals a breakfast bar, ovens, integrated fridge and storage. American oak joinery painted Dulux Shire. Designer Doorware lip pulls in Dulux Pale Eucalypt. Elba marble, Artedomus. V-Zug oven, Winnings. Qasair 'Albany' rangehood. Franke 'Mythos' undermount sink. Astra Walker 'Icon' sink mixer. Stellar Works 'Utility' stools, Living Edge.



who collaborated with Meredith Nettleton of Studio MKN for the interior fixtures and finishes. "The design responds to the movement of the sun as it wraps around the house, with glazing on both sides, as well as a new skylight, to ensure that in winter, the house still feels cosy and bright."

The kitchen anchors one end of the new extension, with a long freestanding wall of joinery that conceals a breakfast bar, integrated appliances and ample storage for crockery and cutlery within its green doors, and the laundry and butler's pantry behind. "Jenny wanted a functional kitchen with a place for everything and the ability to hide it all when entertaining," says Meredith.

On the opposite side, the living area enjoys outdoor views on both sides. A black recess houses a fireplace and TV, with a marble shelf underneath that runs the full length of the wall. A cantilevered steel box frame window seat allows Jenny the illusion of sitting within the garden while still comfortably ensconced inside. "Wrapped entirely in olive green leather upholstery, it anchors the all-white space and creates a connection to the lush surroundings," says Eliza. ▶

Lush is the perfect way to describe the outdoor areas, which include a new deck and pergola built around one of the old grapevines. The twisted branches make a sculptural focal point, while the green foliage provides dappled shade in summer. Flowing from here are a pool and landscaped gardens by Bethany Williamson.

Inside and out, a minimalist aesthetic exudes a sense of calm and relaxation, juxtaposing nicely with the original front half of the home. White concrete floors pave the way with a seamless finish, while timber-lined ceilings finished in a white limewash bring warmth and

subtle texture. Cool grey marble adds a touch of refined elegance and works well with Jenny's collection of Mid-century furniture and artworks.

"The footprint only increased slightly, but everything feels large, light and spacious," says Jenny of her finished home. "The whole experience has been so transformative, and we entertain so much more now. It's become a wonderful place to gather, share food and just be." We think Nonna would be proud.

► *Eliza Blair Architecture: elizablair.com.au. Studio MKN: studiomkn.com. Macasar Building: [@macasarbuilding](https://www.instagram.com/macasarbuilding).*



LIVING Brickwork painted Dulux Natural White. Vitra 'Akari' pendant light. Vintage Danish timber bookshelves, owner's existing. Muuto 'Kink' vase and 'Puppy' object by Eero Aarnio, Living Edge. Architectmade wooden bird, Top3. 'Goblet' planter A in Juniper, Lightly. 'Aalto' vase in Clear, Iittala. 'Assembly' vessel in White and 'Golden' building set, Oh Hey Grace. Douglas Snelling armchair. Eames walnut stool, Living Edge. Elba marble ledge, Artedomus. Polished concrete veneer flooring, Pangaea Floors.

THE PALETTE

Dulux Natural White
(internal walls)

Dulux Shire
(kitchen joinery)

Dulux Colorbond Surfmist
(exterior cladding)

LAUNDRY/BUTLER'S PANTRY A dual function laundry and butler's pantry makes efficient use of the space behind the kitchen and leads out to the backyard. Joinery in Dulux Natural White. Pressed porcelain benchtops, Artedomus. Miele washer/dryer, Winnings. Cheese platter, Mud Australia.



Paint colours are reproduced as accurately as printing processes allow.



THE SOURCE

Offset Mid-century style furniture pieces with a supporting palette of natural textures and soothing hues.



Produced by Andrea Healy.

1 'Rad' large **candelabra** in Brass, \$250, Bludot. 2 'Scallop' **napkins**, \$149, The Conran Shop. 3 *Time Is Slow When We Wait, Fast When We Are Late* **artwork** by Junko Go (140x140cm), \$8500, Gallery Smith. 4 Watt & Veke 'Stockholm' **wreath** in White (35cm), \$143, Royal Design. 5 Muuto 'Ambit' **rail lamp** in Taupe, \$1695, Living Edge. 6 COLORBOND® mini orb **steel sheeting**, POA, BlueScope. 7 Living Divani 'Extrasoft' **sofa**, \$32,730, Space. 8 Iittala 'Alvar Aalto' **metal bowl** in Rose Gold (50cm), \$369, Myer. 9 'EK01' **low stool** in Oak, \$1370, Living Edge. 10 Verve Design 'Kanji' **paper shade table lamp**, \$49.90, Bunnings. H&G